

Southeast AZ Ag- Weather/Climate Working Group

CLIMAS-UA Extension-NOAA NWS Partnership

- **Paul Brown**, Extension Biometeorologist – University of Arizona
- **Mike Crimmins**, Extension Climatologist – University of Arizona, CLIMAS
- **Jeremy Weiss**, Extension Geospatial Scientist – University of Arizona, CLIMAS
- **Emily French**, Forecaster – NOAA-NWS, Tucson WFO
- **Lee Carlaw**, Forecaster – NOAA-NWS, Tucson WFO
- **Jeff Davis**, Forecaster – NOAA-NWS, Tucson WFO
- **Erin Boyle**, Hydrologist – NOAA-NWS, Tucson WFO
- **Alan Hickford**, Student Intern – NOAA-NWS, Tucson WFO
- **Jerald Meadows**, Forecaster - NOAA-NWS, Tucson WFO (now Hanford)
- **JJ Brost**, SOO NOAA-NWS, Tucson WFO (now NWS-SRH)



Southeast AZ Ag Weather/Climate Working Group

- *Audience:* Orchards, vineyards, field crop producers
- *Objective:* Increase Use of existing weather/climate information to support ag risk management
- *Activities:* listserv (>100 members), three workshops, briefings and info sharing, new forecast products, risk climatologies
- *Support:* USDA Climate Hub

Farm and Ranch Weather and Climate Workshop

June 12, 2014 – 8:30 -12pm

(Check-in begins at 8am)

Willcox Community Center – fireplace room

312 W Stewart Street, Willcox

University of Arizona Cooperative Extension and the National Weather Service – Tucson Forecast office are sponsoring a morning long training workshop on weather and climate information focused on supporting agricultural and resource management decision- making. Topics will include:

- Finding and interpreting NOAA-NWS weather monitoring and forecast products
- An overview of the UofA Arizona Meteorological Network and crop and irrigation management products
- A discussion of drought monitoring efforts including an overview of the U.S. Drought Monitor
- El Niño and an update of seasonal forecasts through winter of 2014/15

The workshop will end with an informal discussion of information needs and opportunities for further product and service development to support southeast Arizona. Lunch will be provided.

Please register for the workshop by June 6th by calling 520-384-3594 or by emailing Connie at cforsyth@ag.arizona.edu

Sponsors include Southeastern Arizona Ag Day and...



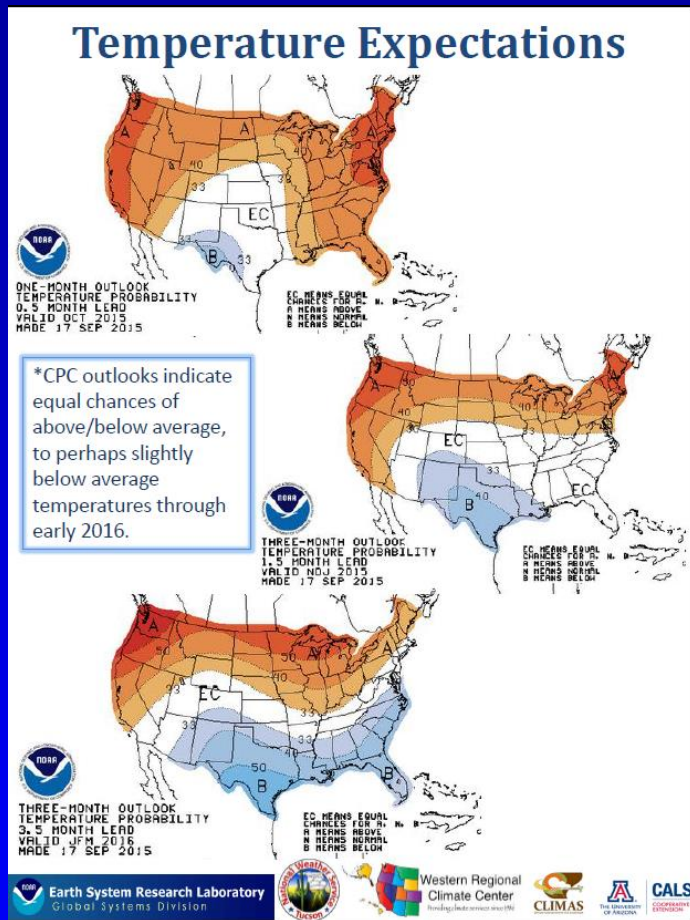
Focus on Freeze Events



Workshops and site visits uncovered spring freeze events are critical concern and forecasts often are too warm

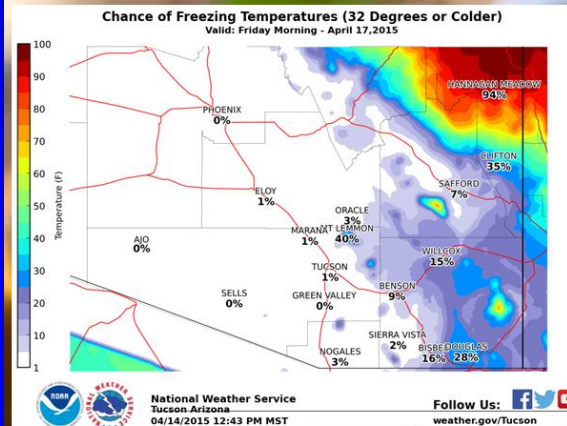


Focus on Freeze Events



Developed ag-weather/climate listserv to engage community with briefing materials, heads-up emails and check-ins on conditions and product use and performance

Chance of Freezing Temperatures Late This Week



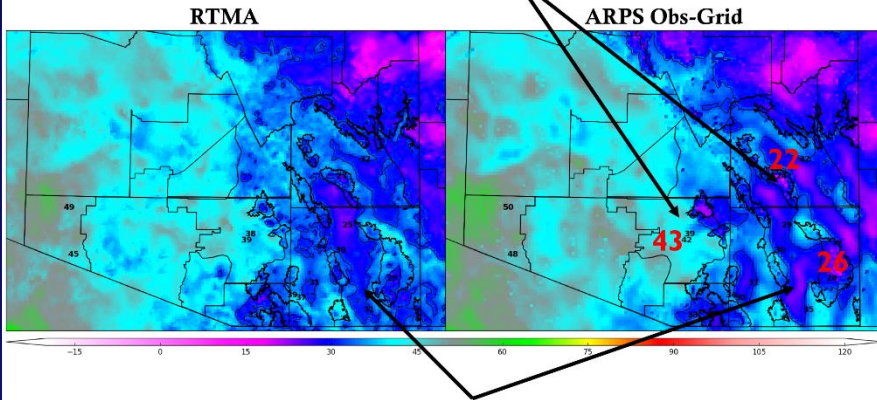
Graphic above displays the chance that low temperatures Friday morning will be 32 degrees or below.

- **TIMING** – Pre-dawn hours on Friday, April 17, with the best chances between 4 am and 7 am. Temperatures of 32 or below will likely occur for 2 hours or less.
- **IMPACTS** – Sensitive and unprotected crops and vegetation will be subject to damage.
- **CONFIDENCE** – High for below-normal low temperatures. Low-Moderate for temperatures at or below freezing.

Focus on Freeze Events

12Z 14 December 2015

Improved terrain artifacts
(3 km HRRR versus 13 km RAP for RTMA)



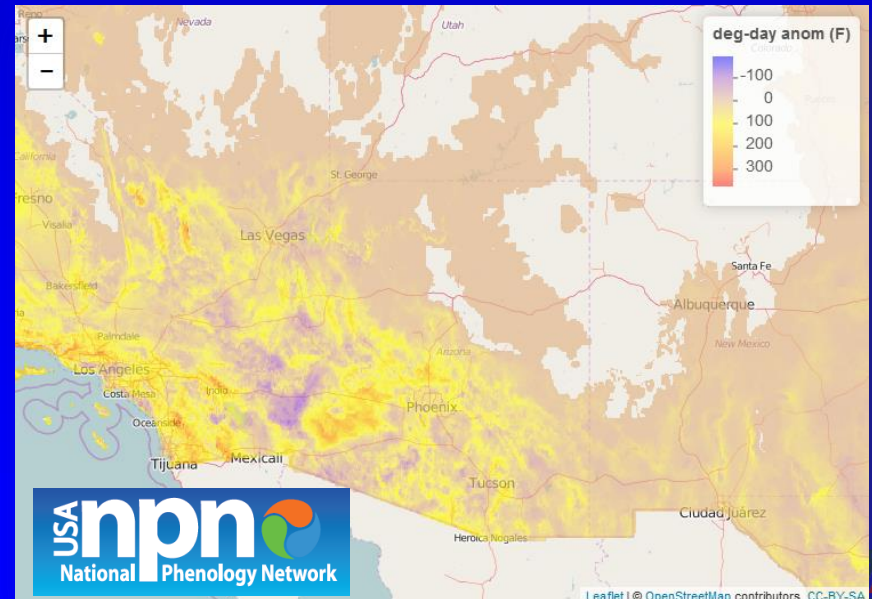
Numerous 25-28 readings from Weather Underground network

Selected observations in red

From Lee Carlaw, NOAA-NWS

NWS-Tucson is developing experimental temperature grid forecast enhancements using home weather station obs; working with growers to deploy more wx stations

Working with USA-NPN to develop RTMA based growing degree day grids to track potential spring phenology anomalies; help to increase forecaster situational awareness to enhanced crop freeze risk based on pheno-anomalies



CSAP